

Corporate Supporters:



Convenors:

Patrick Dowey
University of Manchester

Mark Osborne
BP

Kevin Taylor
University of Manchester

Herbert Volk
BP

Christopher Veale
BP

Keynote Speakers:

Joanne Fredrich
BP

7 YxfJWA ">c\ b
Imperial College London

Clifford Walters
ExxonMobil

Brian Horsfield
Helmholtz Centre
Potsdam

Pim van Bergen
Shell

Event Sponsors:

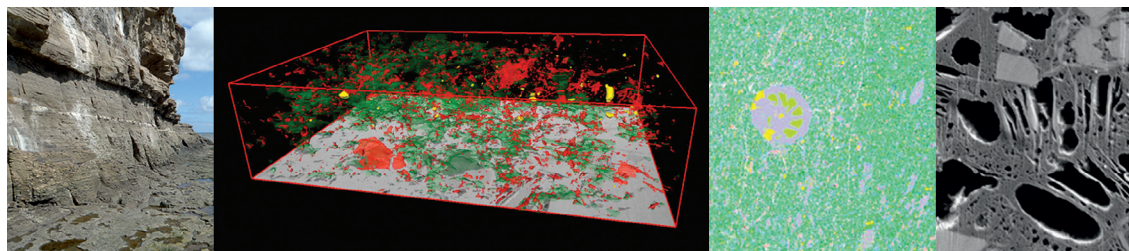


Registration Now Open

Application of Analytical Techniques to Petroleum Systems Problems

28 February – 1 March 2017

The Geological Society, Burlington House, Piccadilly, London



Petroleum systems cover a broad range of topics from source, reservoir and seal development through to the generation, migration and accumulation of hydrocarbons. Continually improving analytical techniques are increasing the understanding of these complex multiphase geochemical systems and how they develop through time. Current industry applications demonstrate how analytical techniques can affect business decisions.

Accurate and precise geochemical measurements using **X-ray absorption spectroscopy** and **clumped isotopes** are revolutionising our understanding of mineral and fluid interactions. High resolution imaging and petrophysical analysis utilising **neutron scattering**, **X-ray computed tomography**, **focused ion beam SEM** and **automated mineralogy** facilitate the quantification of fine-grained and complex geological systems on a scale which could not be imagined a decade ago. **Real-time geochemical analysis of fluids** can enable detailed analysis of fluid compositions, the detection of reactive fluids such as CO₂ and H₂S, the geosteering of wells to potential sweet spots and identify reservoir compartmentalisation.

This conference seeks to align both academia and industry in demonstrating the current application of geochemical and imaging techniques and to highlight the potential of emerging techniques including:

- **Imaging** – electron microscopy, automated mineralogy, cathodoluminescence and neutron scattering
- **Isotopes** – radiogenic isotopes, stable isotopes, clumped isotopes, non-traditional isotopes and noble gases
- **Geochemistry at varying scales** – infrared spectroscopy, Raman spectroscopy, organic analysis, synchrotron spectroscopy and fluid inclusions
- **Applications/Case Studies** – wellsite applications, reservoir studies, chemostratigraphy, pore scale imaging and 3D modelling

For further information please contact:

Sarah Woodcock, The Geological Society, Burlington House, Piccadilly, London W1J 0BG.
Tel: +44 (0)20 7434 9944 sarah.woodcock@geolsoc.org.uk



At the forefront of petroleum geoscience

www.geolsoc.org.uk/petroleum